

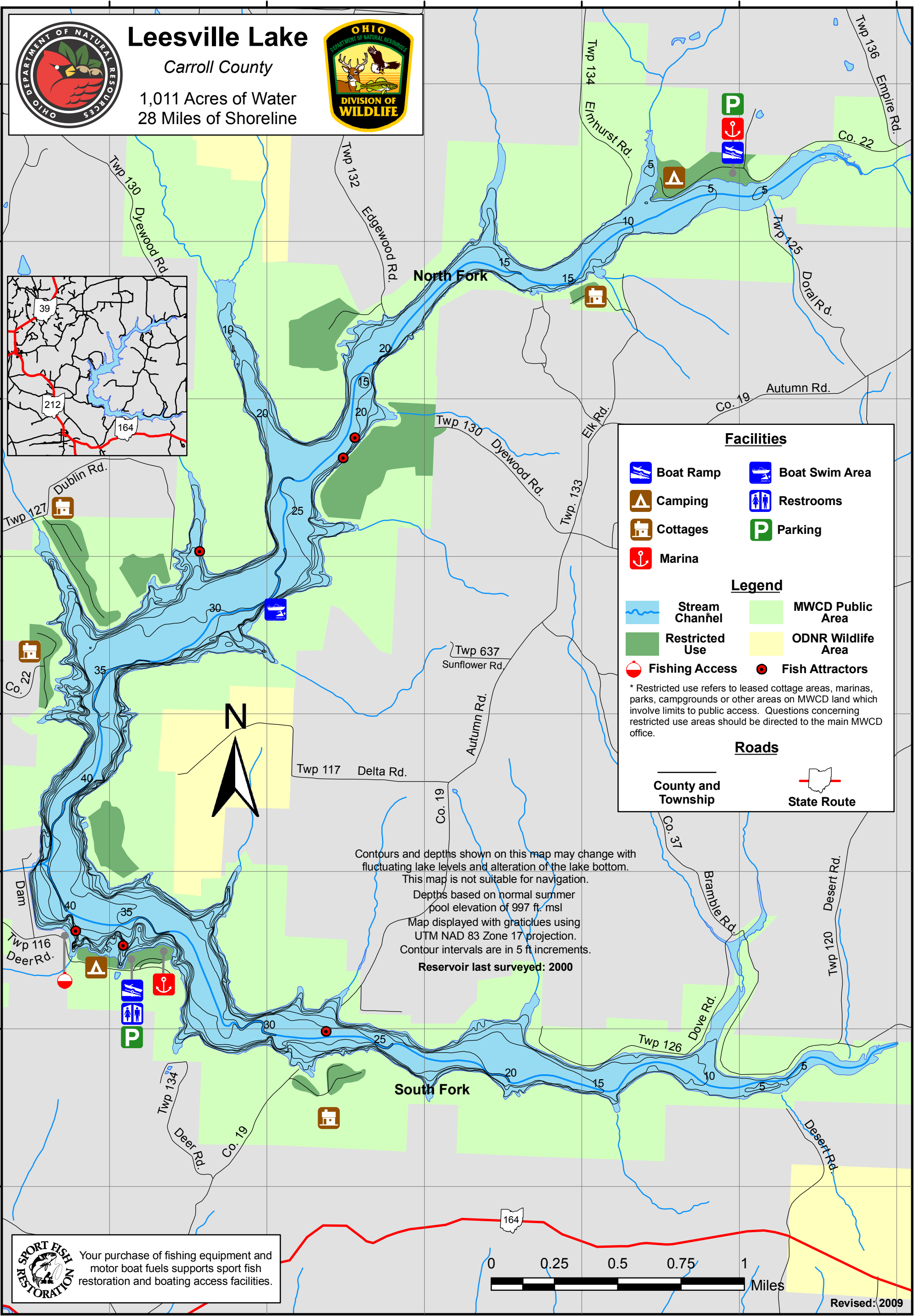
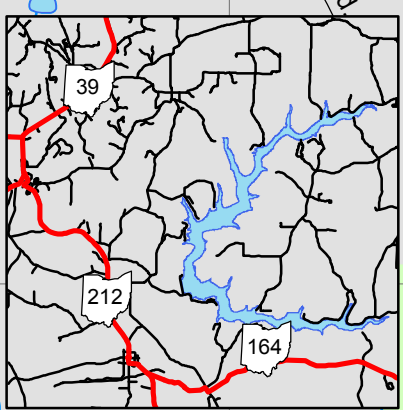
484000 485000 486000 487000 488000 489000

4485000
4484000
4483000
4482000
4481000
4480000
4479000
4478000



Leesville Lake

Carroll County
1,011 Acres of Water
28 Miles of Shoreline



Facilities

- Boat Ramp
- Camping
- Cottages
- Marina
- Boat Swim Area
- Restrooms
- Parking

Legend

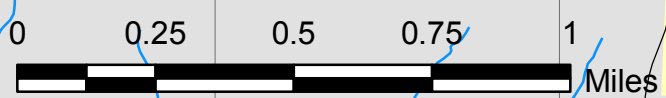
- Stream Channel
- Restricted Use
- Fishing Access
- MWCD Public Area
- ODNR Wildlife Area
- Fish Attractors

Roads

- County and Township
- State Route

Contours and depths shown on this map may change with fluctuating lake levels and alteration of the lake bottom. This map is not suitable for navigation. Depths based on normal summer pool elevation of 997 ft. msl. Map displayed with graticules using UTM NAD 83 Zone 17 projection. Contour intervals are in 5 ft increments. Reservoir last surveyed: 2000

SPORT FISH RESTORATION
Your purchase of fishing equipment and motor boat fuels supports sport fish restoration and boating access facilities.



Revised: 2009

Leesville Lake Fishing Map